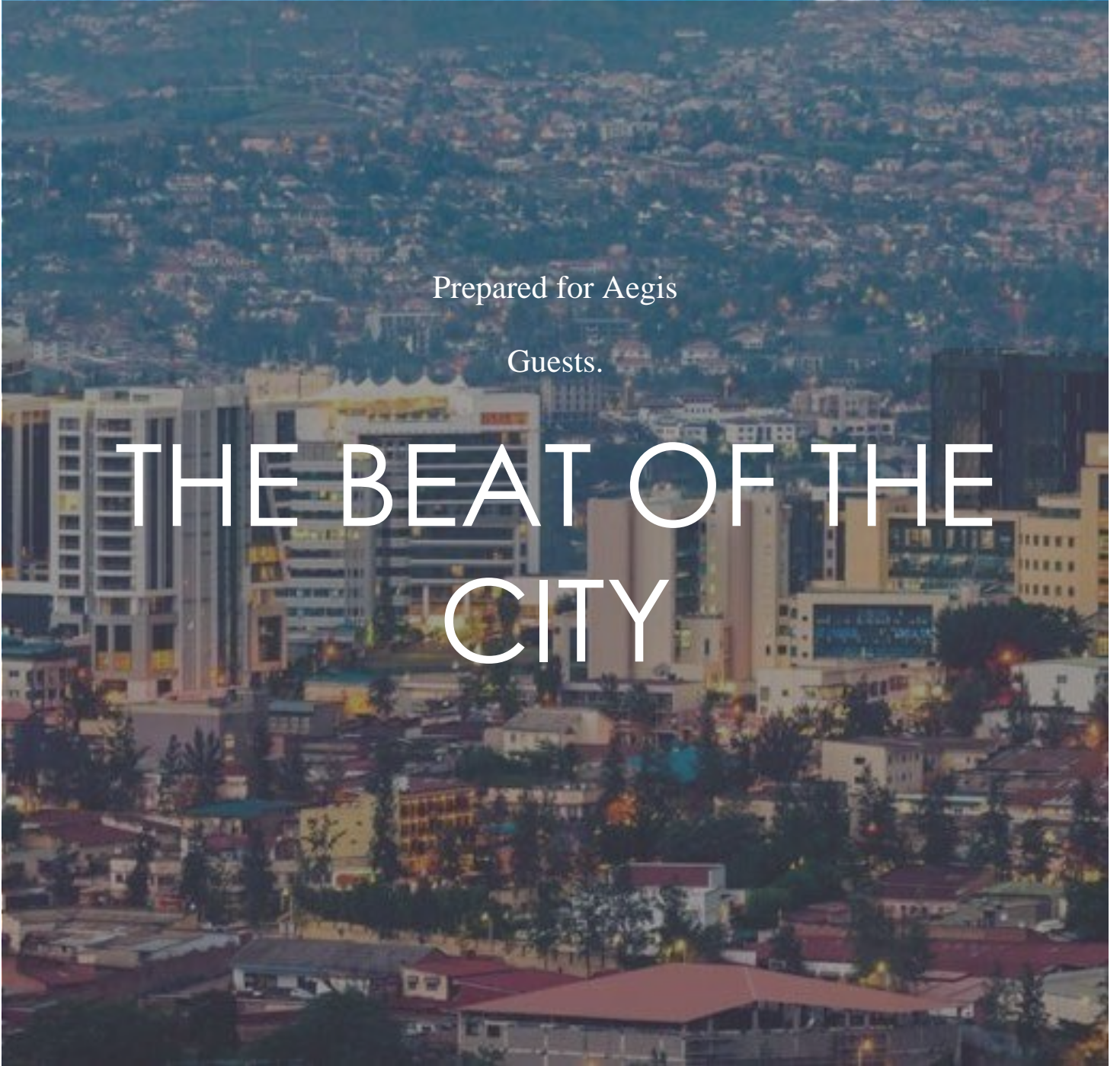
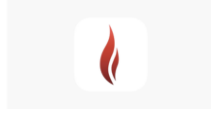


Prepared for Aegis

Guests.

THE BEAT OF THE CITY





Map

Visualize your journey

Summary



Overview

Itinerary at a glance

In Kigali

This morning after breakfast, embark on a **Kigali city tour** that encompasses the essence of the city of Kigali. The tour will start with a visit to the Kigali Genocide Memorial which is the center of all memorials in Rwanda.

The memorial is a place of remembrance and learning, a beacon to the Rwandan people.

Kigali Genocide Memorial

Afterwards you will explore the various activities which have been curated to provide visitors with a compelling story of the land of a thousand hills.

This includes a tour to the Campaign against genocide, one of the eight museums managed by the Rwanda Cultural Heritage Academy. It is housed in the Parliamentary building of Rwanda and was inaugurated in 2017 by Paul Kagame with an aim to showcase the history of Rwanda during the campaign against the genocide against the Tutsi.

Nyamirambo women's center tour

Starting at \$125 PER PERSON

(Minimum 5 pax travelling)

Nyamirambo Women's Center (NWC), a Rwandan NGO, was launched at the end of 2007 by 18 Rwandese women living in Nyamirambo, Kigali. Together they created a project which aimed to address gender-based violence, gender inequality and discrimination. Today, NWC's mission is to provide education and vocational training to women who do not have the means to pay for such training on their own, so that they can gain better opportunities for employment.

Nyandugu Eco park tour

Starting at \$125 PER PERSON

(Minimum 5 pax travelling)

Nyandugu Urban Wetland Ecotourism Park is a 120 hectares of surface area, Rwandan tourism park located between Gasabo and Kicukiro Districts which allows sustainable travel of people to enjoy natural areas and wild animals in Nyandugu Valley.

Umusambi Village tour - \$125 per person

Founded by the Rwanda Wildlife Conservation Association under the leadership of veterinarian Olivier Nsengimana, is a restored marshland in Kigali, Rwanda that serves as a shelter for more than 50 vulnerable grey crowned cranes rescued from the illicit pet trade.

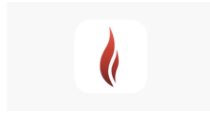
In Rwamagana District

Ubumuntu "Good Human" Coffee Tour

Starting at \$125 PER PERSON

(Minimum 5 pax travelling)

Good Human is a coffee company like no other. Working to change the industry & bring you incredible coffee, packed with purpose. A true story of 'crop to cup, Good Human and The Aegis Trust, have sought out a handful



of hard working coffee communities in Rwanda, helping them to earn more for their crop. We do this by helping growers improve the quality of their coffee, which in turn attracts a higher sale price at harvest. The Aegis Trust are a long established NGO, who run a peace and values education programme in Rwanda. By improving farmer income, alongside peace and values education, we can establish a stable, sustainable and peaceful future for these communities. All profits made by Good Human are reinvested in our coffee growing communities and helping Aegis to fulfil its important mission. This particular coffee is from the Muyumbu Coffee Washing Station, located in the Rwamagana District of Rwanda's eastern province. The distinct micro-climate of this region, high elevation and rich fertile soils produce coffee with balanced, sweet, floral, and fruit-forward notes.

Bugesera District

Ntarama & Nyamata Genocide Memorials

Starting at \$125 PER PERSON

(Minimum 5 pax travelling)

Visit to the Ntarama and Nyamata Memorials, short drive south out of Kigali and to visit and learn about the history of Bugesera District where Tutsis from North were moved to be killed by TseTse fly in 1962, and we visit Nyamata and Ntarama Memorials former catholic churches.

Rweru Reconciliation village

Starting at \$125 PER PERSON

(Minimum 5 pax travelling)

The reconciliation village of Rweru is peacefully inhabitant by survivors, repented perpetrators, rescuers, returnees, and the new generations of Rwandans born post genocide. The reconciliation is a powerful example of forgiveness, resilience, unity, reconciliation, empathy, and the spirit of the new Rwanda post atrocities.

In Kayonza District

Rukara Reconciliation village

Starting at \$125 PER PERSON

(Minimum 5 pax travelling)

Located in Kayonza district, Rukara sector, Eastern Province, this community is just two hours from Kigali and an hour from Akagera National Park. It's made up of survivors and former perpetrators of the 1994 Genocide against the Tutsi, who have reconciled and seek to learn from the past. With 200 head of family members, 600 extended families, and 2500 youths involved in peace clubs, the village welcomes visitors interested in understanding its history, including researchers, university students, and tourists on learning tours.

National Parks

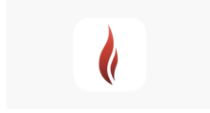
Akagera National Park

Experience a Day Trip to one of the National Parks in Rwanda within proximity to the city:

(For all Tours departure from Kigali is at 0400hrs)

Journey to Akagera National Park for a Day Trip

0400hrs Depart Kigali with Packed breakfast & lunches and drive 2 hours 30 minutes for a full day game drive experience in the Rwandan Savannah, including boat ride and packed lunches. Akagera National Park



Starting at \$524 PER PERSON
(Minimum 7 pax travelling)

Includes: Park entry fees, vehicle and guide, packed breakfast & lunch boxes, Boat ride on Lake Ihema)

Volcanos National Park

Embark on a Gorilla Trekking Experience

0400hrs Depart Kigali with packed breakfast and drive 2 hours 30 minutes to the Volcanoes National Park, where you will embark on a Gorilla trekking experience within the Virunga Massive. Gorilla Trekking

Starting at \$1839 PER PERSON (Minimum 7 pax travelling) Includes: Gorilla Trekking Permit, vehicle and guide, packed breakfast, Porters, Lunch at a local restaurant in Musanze)

Gishwati National Park

3. Experience a chimpanzee trekking experience in Gishwati Forest National Park

0400hrs: Journey to the Northern part of Rwanda into the country's newest National Park and home to a population of Chimpanzee families. Lunch will be provided at the Forest of Hope Guest house. Chimp Trekking
Gishwati

Starting at \$685 PER PERSON (Minimum 7 pax travelling) Includes: Chimpanzee Trekking Permit, vehicle and guide, packed breakfast, Porters, Lunch at Forest of Hope Guest House)



| Gallery

A place of remembrance and learning

The Kigali Genocide Memorial is the final resting place for more than 250,000 victims of the 1994 genocide against the Tutsi.

The Kigali Genocide Memorial includes three permanent exhibitions. The largest one documents the 1994 Genocide against the Tutsi and gives an outline of Rwandan society before colonisation, the horrors of the genocide, as well as stories of survival and rescue. There is also a children's memorial and an exhibition on the history of genocidal violence around the world. Outside, visitors can walk around the mass graves, visit the wall of names, and find a quiet place in the gardens of reflection.

The Memorial hosts a range of remembrance events and activities throughout the year, many of which occur during the annual commemoration period, from April 7 to July 4, in honor of the three months that the Genocide against the Tutsi lasted.

The Kigali Genocide Memorial is a guided experience. Visitors can choose between a guided tour by one of the staff witnesses or purchase the KGM digital guide and follow an audio-visual tour of the memorial.

A tour of the entire memorial takes approximately one hour and thirty minutes.





Rweru Reconciliation village

The reconciliation of Rweru is peacefully inhabited by survivors, repented perpetrators, rescuers, returnees, and the new generations of Rwandans born post genocide. The reconciliation is a powerful example of forgiveness, resilience, unity, reconciliation, empathy, and the spirit of the new Rwanda post atrocities.

Rukara Reconciliation village

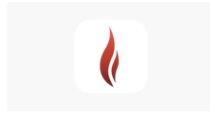
Located in Kayonza district, Rukara sector, Eastern Province, this community is just two hours from Kigali and an hour from Akagera National Park. It's made up of survivors and former perpetrators of the 1994 Genocide against the Tutsi, who have reconciled and seek to learn from the past. With 200 head of family members, 600 extended families, and 2500 youths involved in peace clubs, the village welcomes visitors interested in understanding its history, including researchers, university students, and tourists on learning tours.



| Akagera National Park

Area Overview

Akagera National Park is a protected area in eastern Rwanda covering 1,122 km² (433 mi²) with savannah, montane, and swamp habitats. A complex system of lakes and papyrus swamps makes up over a third of the park, which is home to one of Africa's highest hippo densities, as well as crocodiles, the rare sitatunga, and more than 520 bird species. Antelope, giraffe, and buffalo exist in the park and it also boasts a healthy population of lion, which were reintroduced in 2015 after a 20 year absence; similarly, black rhino were reintroduced in 2017. Now the park can once again lay claim to being a Big Five destination.



| Gorilla Trekking

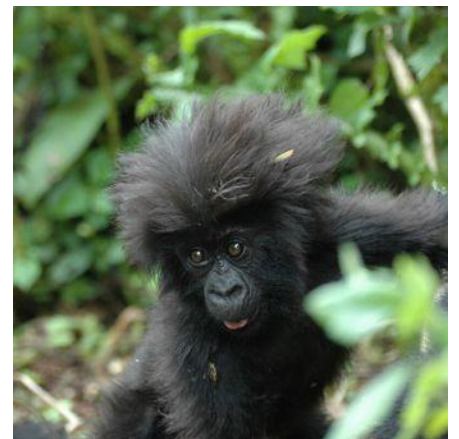
Activity overview

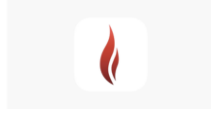
The Virunga Mountains straddle the borders of Rwanda, Uganda, and the Democratic Republic of Congo, and are home to around 480 mountain gorillas, more than half of the world's entire population — the rest live in Uganda's Bwindi Impenetrable Forest.

In Volcanoes National Park, which encompasses five of the eight volcanoes in the Virunga Mountains, twelve gorilla groups are now habituated for tourism and offer one of the world's most awe-inspiring natural experiences. To be in the presence of these gentle giants at such close quarters is truly a once in a lifetime experience.

Although the immense size of the silverbacks might be overwhelming, these 400-pound creatures are actually extremely accommodating to human presence amongst their family. The guides might even teach you a few words in 'Gorilla' so you can greet them and show that you are, in fact, friendly!

The day of the trek usually begins with an early start at your hotel and then a drive to park headquarters at Kinigi. Here, park officials assign you to a gorilla family and you meet your gorilla guides. After being briefed on protocols, you head over to the specific starting point, where teams of





porters are available for hire. Remember, you are trekking for around 2,500m and so any help is welcome.

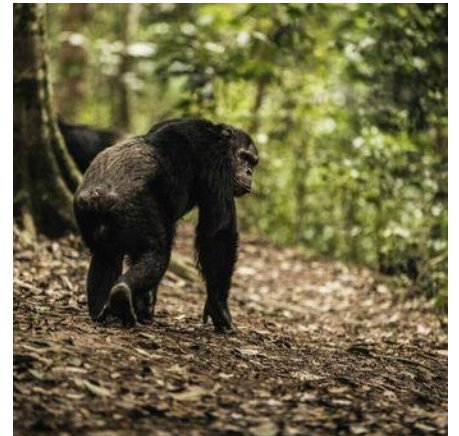
Groups are limited to eight guests. The initial trek is usually through rural Rwanda's open fields of potatoes and pyrethrum, until you reach the rough wall boundary of the park itself. From here, your guide will be in communication with the trackers and you will begin the hike through the forest to meet the gorillas. Your permit allows you one hour with the gorilla family, after which you say goodbye to your trackers and hike back down to meet your awaiting vehicle.



| Chimp Trekking Gishwati

Activity overview

Gishwati Mukura national park is the newest national park in Rwanda that was established in 2015 after merging Gishwati forest and Mukura forest. The main purpose for the establishment of the national park was to conserve a number of wildlife features that were found in both the forests although it is the smallest among the national parks in Rwanda with a total of 34 square kilometers, there's a lot in the park that can be discovered like the different primate species, amazing views, bird species when you participate in Gishwati Mukura national park. With the establishment of Gishwati Mukura national park and the wildlife populations that can be seen that can be seen when you visit the park it is clear to say that the park will be among the most visited





destinations for tourists interested in viewing a number of primate species in relatively undisturbed eco-systems in Rwanda.

Chimpanzee trekking in Rwanda is famous in Nyungwe which has two chimpanzee troops that can be accessed in cyamudongo forest and Nyungwe forest which will give you the chance to spend one hour with the chimpanzee troops. Chimpanzee trekking in Gishwati is the major activity that is carried out in the park and from tourists interested in the activity, you should note that it starts early in the morning where tourists will be met at the reception area where you will participate in the briefing session which involves being briefed about the rules and regulations to follow during chimpanzee trekking in the park.

After the session, you will embark on your journey to the park to the habituated chimpanzee troops which you will spend one hour with observing their different features in the wild. Some interesting features that you will understand about the chimpanzees include; the fact that females get red swellings on their bottoms, you will get to see the adult females in the chimpanzee troops grooming and breast feeding the young ones among other interesting features of the primates. Chimpanzee trekking can be carried out all year round however the it is best done during the dry months because it is easier to walk in this terrain.



Costs

Notes:

Please note that some activities mentioned within the itinerary will incur additional costs as mentioned below:

1. Journey to Akagera National Park for a Day Trip

Starting at \$524 PER PERSON

(Minimum 7 pax travelling)

Includes: Park entry fees, vehicle and guide, packed breakfast & lunch boxes, Boat ride on Lake Ihema)

2. Embark on a Gorilla Trekking Experience

Starting at \$1839 PER PERSON

(Minimum 7 pax travelling) Includes: Gorilla Trekking Permit, vehicle and guide, packed breakfast, Porters, Lunch at a local restaurant in Musanze)

3. Experience a chimpanzee trekking experience in Gishwati Forest National Park

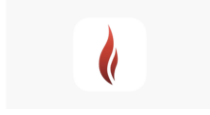
Starting at \$685 PER PERSON

(Minimum 7 pax travelling) Includes: Chimpanzee Trekking Permit, vehicle and guide, packed breakfast, Porters, Lunch at Forest of Hope Guest House)

This Cost Includes:

Full day transport, Lunch and coffee break, services of a professional english/french speaking guide
Entrance fees for selected activities.

This Cost Does Not Include:



Anything of personal nature and items not listed in the inclusions section